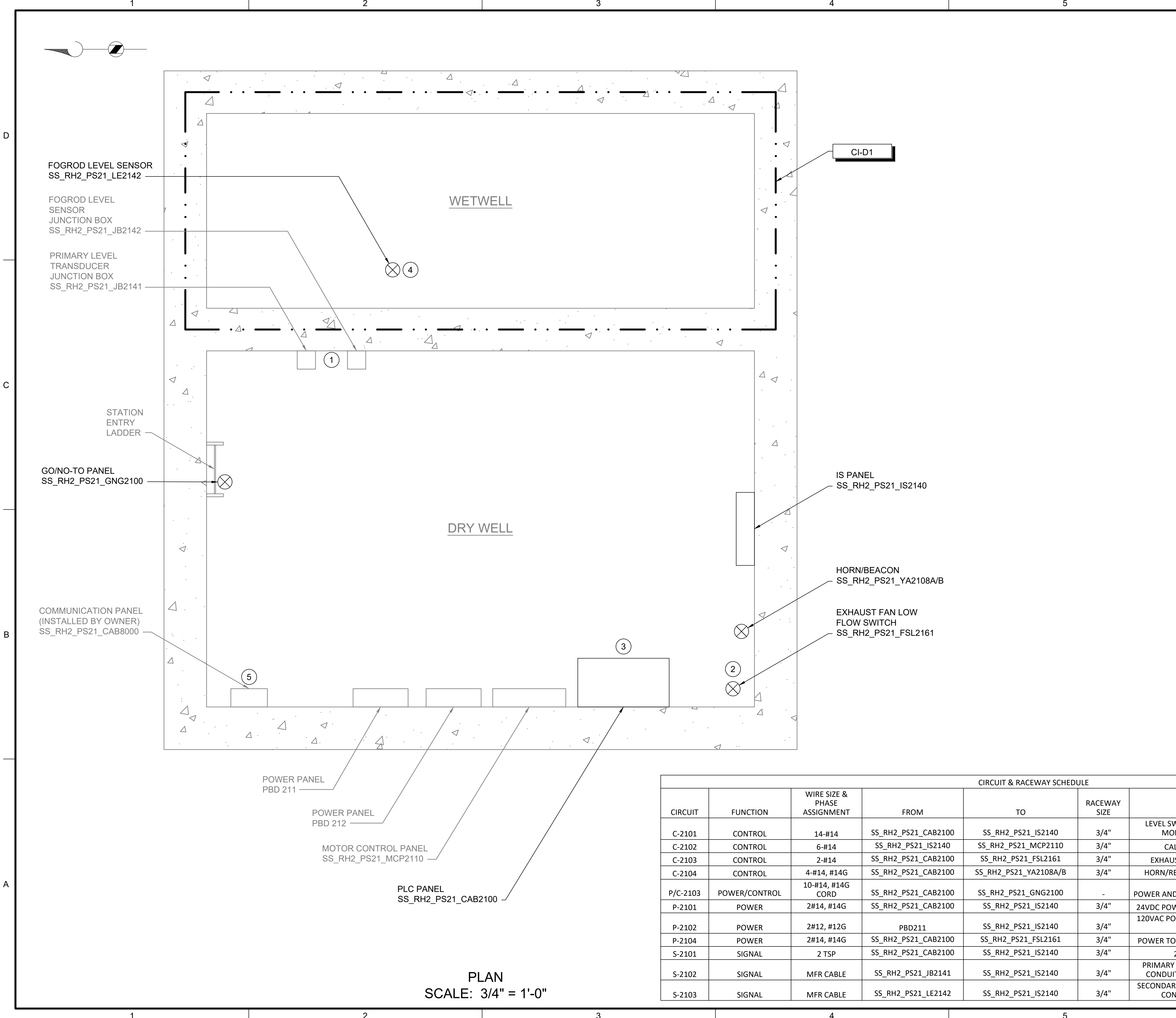


Path: C:\USERS\DJACKSON\BPC\DWG\1820948 FILENAME: I21701.DWG PLOT DATE: 6/24/2022 11:50 AM CAD USER: DAN JACKSON



PLAN
SCALE: 3/4" = 1'-0"


CIRCUIT & RACEWAY SCHEDULE							
CIRCUIT	FUNCTION	WIRE SIZE & PHASE ASSIGNMENT	FROM	TO	RACEWAY SIZE	DESCRIPTION	LOCATION(S)
C-2101	CONTROL	14-#14	SS_RH2_PS21_CAB2100	SS_RH2_PS21_IS2140	3/4"	LEVEL SWITCHES, FAULT, PANEL MONITORING, SPARES	GRATING LEVEL
C-2102	CONTROL	6-#14	SS_RH2_PS21_IS2140	SS_RH2_PS21_MCP2110	3/4"	CALL PUMPS TO RUN	GRATING LEVEL
C-2103	CONTROL	2-#14	SS_RH2_PS21_CAB2100	SS_RH2_PS21_FSL2161	3/4"	EXHAUST FAN FLOW SWITCH	GRATING LEVEL
C-2104	CONTROL	4-#14, #14G	SS_RH2_PS21_CAB2100	SS_RH2_PS21_YA2108A/B	3/4"	HORN/RED BEACON FAN ALARM	GRATING LEVEL
P/C-2103	POWER/CONTROL	10-#14, #14G CORD	SS_RH2_PS21_CAB2100	SS_RH2_PS21_GNG2100	-	POWER AND CONTROL TO GNG PANEL	GRATING LEVEL TO STATION HATCH DOOR
P-2101	POWER	2#14, #14G	SS_RH2_PS21_CAB2100	SS_RH2_PS21_IS2140	3/4"	24VDC POWER TO IS PANEL MODULE	GRATING LEVEL
P-2102	POWER	2#12, #12G	PBD211	SS_RH2_PS21_IS2140	3/4"	120VAC POWER TO IS PANEL POWER SUPPLY	GRATING LEVEL
P-2104	POWER	2#14, #14G	SS_RH2_PS21_CAB2100	SS_RH2_PS21_FSL2161	3/4"	POWER TO THERMAL FLOW SWITCH	GRATING LEVEL
S-2101	SIGNAL	2 TSP	SS_RH2_PS21_CAB2100	SS_RH2_PS21_IS2140	3/4"	2 LIT READINGS	GRATING LEVEL
S-2102	SIGNAL	MFR CABLE	SS_RH2_PS21_JB2141	SS_RH2_PS21_IS2140	3/4"	PRIMARY WETWELL LEVEL. *NEW CONDUIT FROM JB TO IS PANEL	GRATING LEVEL
S-2103	SIGNAL	MFR CABLE	SS_RH2_PS21_LE2142	SS_RH2_PS21_IS2140	3/4"	SECONDARY WETWELL LEVEL. *NEW CONDUIT IN DRY WELL	GRATING LEVEL

GENERAL NOTES:

1. PLAN DRAWING IS PARTIAL REPRESENTATION OF THE SITE AND IS ONLY INTENDED TO PROVIDE DETAILS RELATED TO THE SCOPE OF THIS WORK.
2. REFERENCE AS-BUILT RECORD DRAWING BY CAREY & KRAMER CONSULTING ENGINEERS, DRAWING NUMBER 6223-M315.2, SHEET 16 OF 32 FOR ELEVATIONS RELATED TO WIRING AND CONDUIT DEMOLITION.
3. REFER TO CIRCUIT & RACEWAY SCHEDULE ON THIS DRAWING FOR NEW WIRING AND CONDUIT WITHIN THE PUMP STATION.




KEY NOTES:

- 1 REFER TO SECTION 26 05 00 FOR SEALOFF REQUIREMENTS FROM CLASS I DIV 1 WETWELL.
- 2 REFER TO DWG I-00004 DETAIL C FOR THERMAL FLOW SWITCH INSTALLATION DETAIL ON EXISTING EXHAUST DUCT.
- 3 REFER TO SECTION 26 05 00 FOR PLACING COMPRESSION FITTINGS ON EXISTING CONDUIT TO ROUTE TO NEW PANEL.
- 4 COORDINATE WITH OWNER ON FOGROD INSTALLATION LOCATION IN WETWELL.
- 5 LOCATION OF COMMUNICATION PANEL IS APPROXIMATE. COORDINATE WITH OWNER ON FINAL COMMUNICATION PANEL LOCATION.



701 PIKE STREET
SUITE 1200
SEATTLE, WASHINGTON

PERMIT ISSUE

CITY OF MERCER ISLAND

SEWER SCADA SYSTEMS REPLACEMENT

REVISIONS		
REV	DATE	DESCRIPTION

LINE IS 2 INCHES AT FULL SIZE

DESIGNED: CAB
DRAWN: DDJ
CHECKED: LSL
CHECKED: LSL
APPROVED: CAB

FILENAME: I-21701.DWG
BC PROJECT NUMBER: 153585
CLIENT PROJECT NUMBER

INSTRUMENTATION

PUMP STATION 21 - PLAN

DRAWING NUMBER
I-21701
SHEET NUMBER
XX OF XX